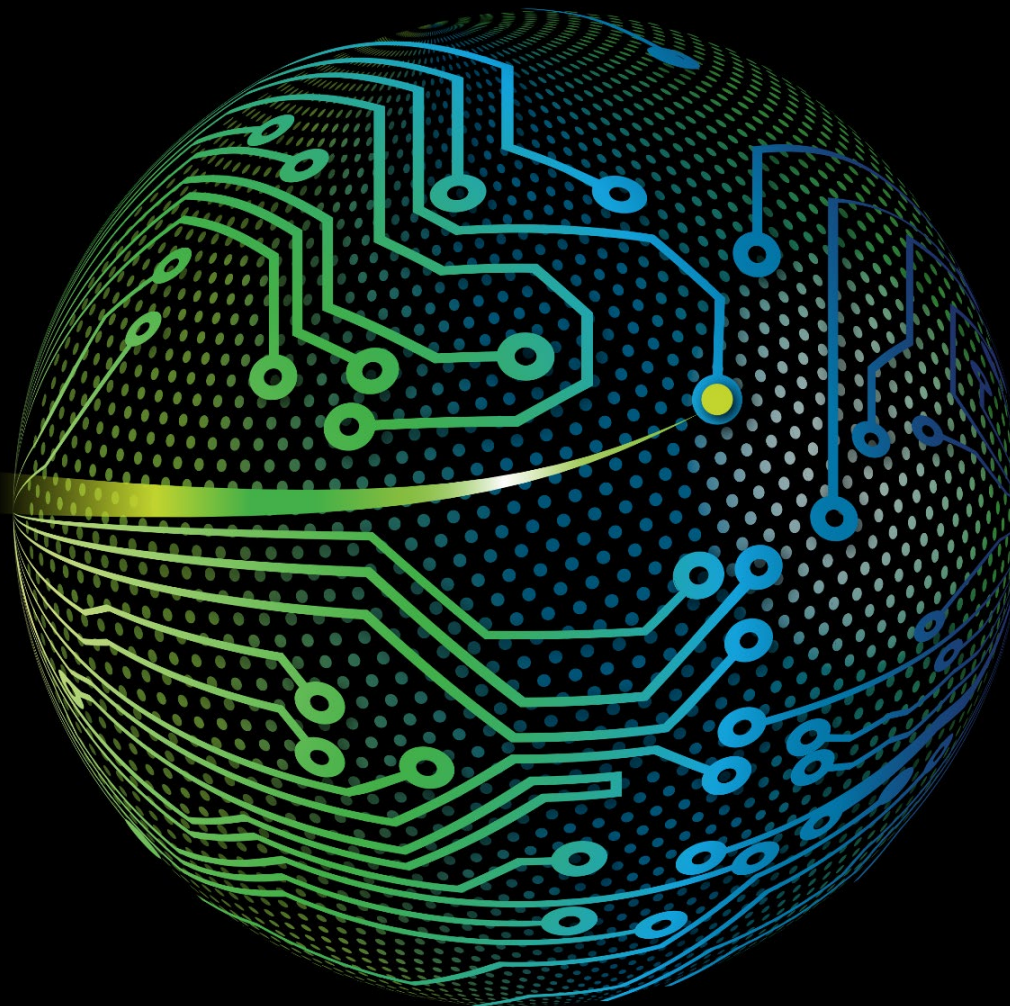


Deloitte.



Tax Technology Consulting
Engineer a digital tax function



DELOITTE

TAX TECHNOLOGY
CONSULTING



Putting the **possible**
into **practice.**

- Envision a world where **tax has an ecosystem of digital tax solutions**
- that scale to meet ever-changing tax policies and tax reform. Our tax
- technology professionals have the skills and experience to help at any
- stage of your digital transformation.

Tax-aligned ERP

We help you advocate for tax throughout an ERP project—from design, to implementation, to maintenance—so your ERP and tax technology are aligned to support all aspects of tax, from compliance to contributing business value.

Unified tax technology ecosystem

We help establish your tax technology ecosystem by implementing market-leading tax software on both third-party and proprietary systems.

Streamlined data and analytics

We help build a reliable data model that harnesses tax automation and business process controls to generate the right data at the right time.

Consistent processes and governance

We work with you to improve management, oversight, and control, drawing on a combination of deep tax experience and innovative technology.

[Click here to learn more about Deloitte](#)

We see the **big picture**.



Deloitte's 360-degree view of digital transformation across organizations sets us apart. Our breadth of capabilities gives us the ability to connect dots in the complex tax technology architecture.

WE PROVIDE:

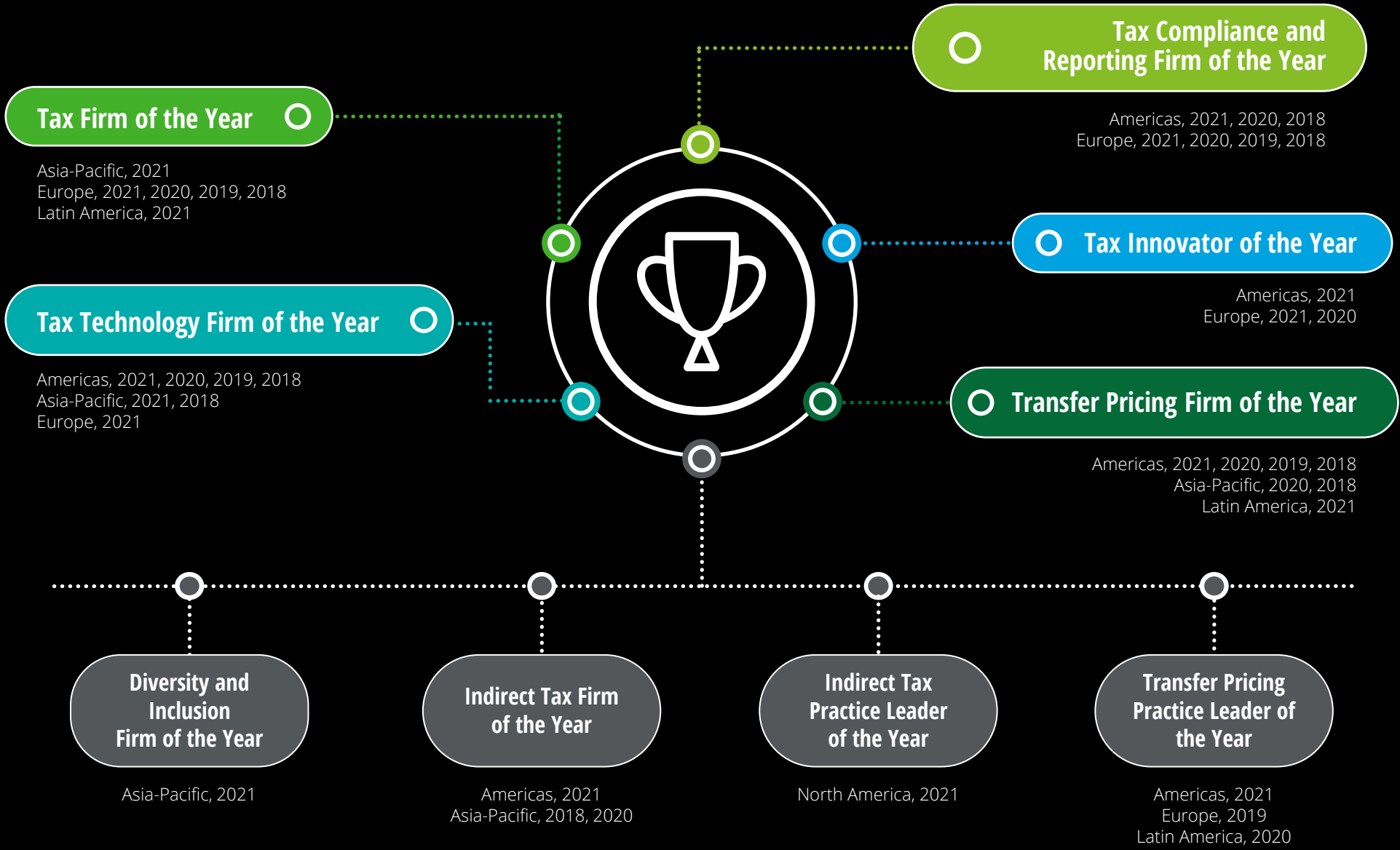
A unique blend of experience we call the Deloitte advantage—working with you to design exactly what your future should be, then help you get there.

A cross-functional team whose efforts are guided by not only tax professionals but also experienced leaders in many other disciplines who might benefit your transformation.

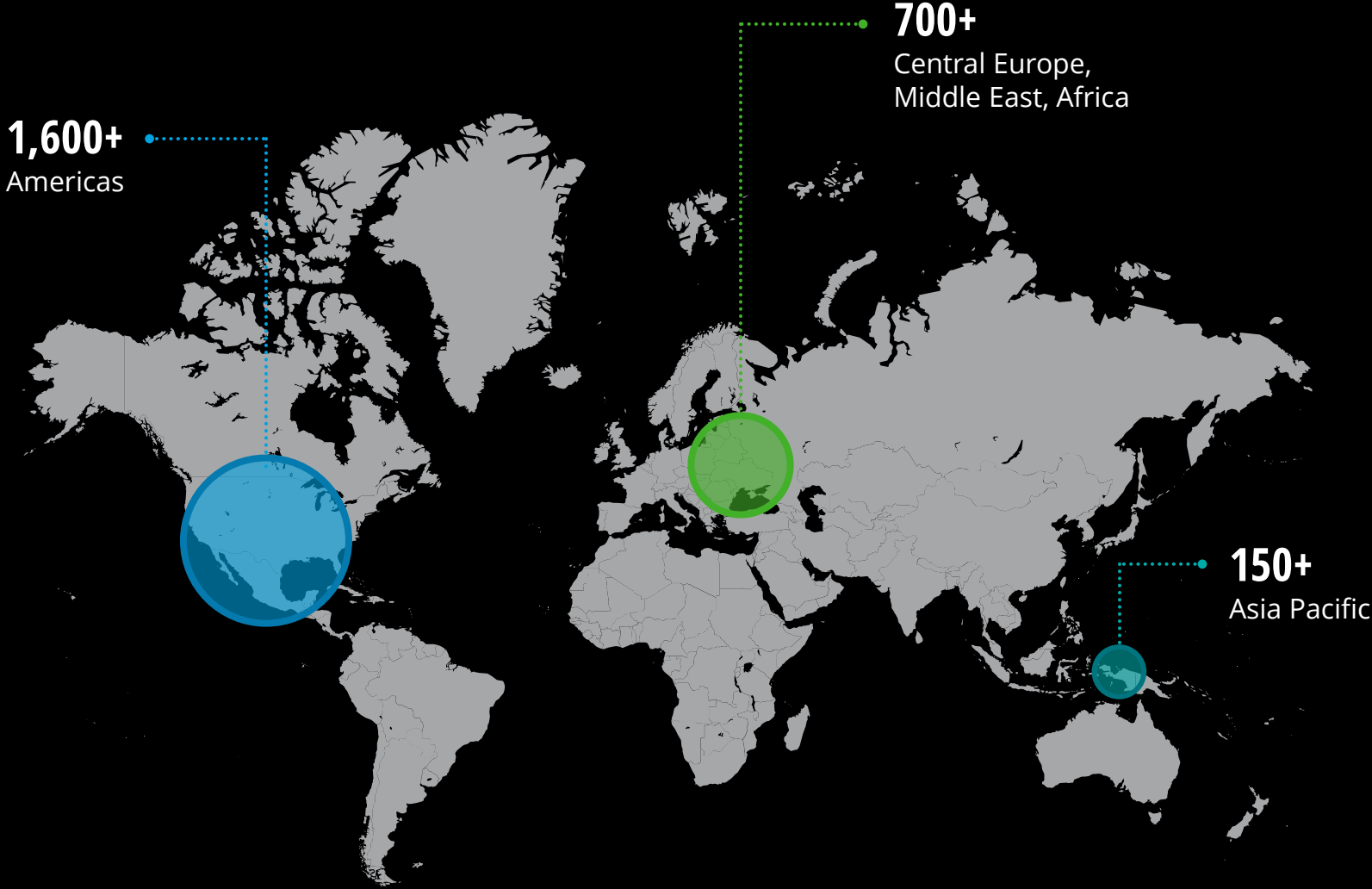
Deep expertise in every aspect of tax and tax technology so we can deliver a customized strategy and execution that addresses your most in-depth and complex tax-specific needs.

We are a recognized leader and quality service provider of choice.

INTERNATIONAL TAX REVIEW AWARDS



Tax technology practitioners by the numbers



150+
Countries



51,000+
Tax and legal
professionals



3,500+
Indirect tax
practitioners

Harness the power of our strong alliances. You will get the scale and depth of an unrivaled combination of industrywide vendor relationship's leading practices, proven accelerators, and deep experience in tax solution integrations. We have long-standing vendor relationships along with an established methodology to accelerate software implementations.

OUR QUALIFICATIONS

- Gartner ranked Deloitte No. 1 in consulting services globally
- Biggest CIP firm in license sales for the Thomson Reuters ONESOURCE suite of products
- Highest level of SAP accreditation: Global Partner—Services
- Diamond alliance partner with Oracle
- First Big 4 firm to attain Diamond tier status in Thomson Reuters' Certified Implementer Program (CIP)
- First Big 4 firm to form a strategic alliance with Vertex
- A team of 100+ Corptax-certified professionals—more than any other Big 4 organization
- First Gold Certified Implementation Partner appointed by Longview
- Dedicated Longview practice with the only Longview architect not employed by Longview

Deloitte.

Let's connect.

Whether you need to evaluate tax policy and strategy, integrate systems, improve internal processes and controls, or implement third-party or proprietary software, our tax technology professionals have the skills and experience to help at any stage of your digital transformation.



Jen Deutsch

Partner | Deloitte Tax LLP
jdeutsch@deloitte.com
+1 213 364 4829



Stephane Lunan

Partner | Deloitte Tax LLP
slunan@deloitte.com
+1 713 982 4004

www.deloitte.com/us/movetaxforward

This publication contains general information only and Deloitte is not, by means of this publication, rendering accounting, business, financial, investment, legal, tax, or other professional advice or services. This publication is not a substitute for such professional advice or services, nor should it be used as a basis for any decision or action that may affect your business. Before making any decision or taking any action that may affect your business, you should consult a qualified professional advisor. Deloitte shall not be responsible for any loss sustained by any person who relies on this publication.

About Deloitte

Deloitte refers to one or more of Deloitte Touche Tohmatsu Limited, a UK private company limited by guarantee ("DTTL"), its network of member firms, and their related entities. DTTL and each of its member firms are legally separate and independent entities. DTTL (also referred to as "Deloitte Global") does not provide services to clients. In the United States, Deloitte refers to one or more of the US member firms of DTTL, their related entities that operate using the "Deloitte" name in the United States and their respective affiliates. Certain services may not be available to attest clients under the rules and regulations of public accounting. Please see www.deloitte.com/about to learn more about our global network of member firms.